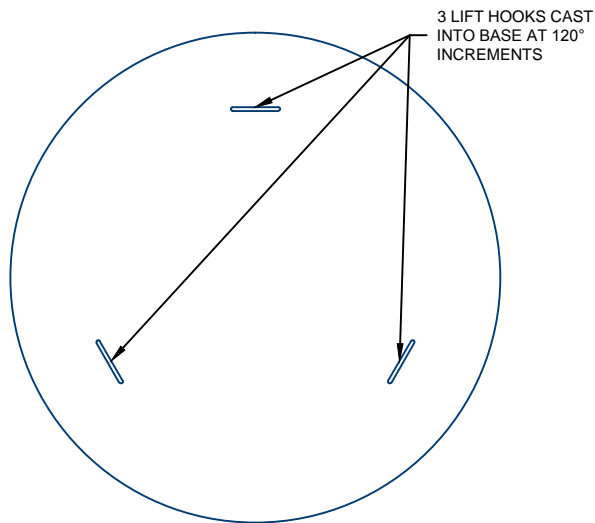
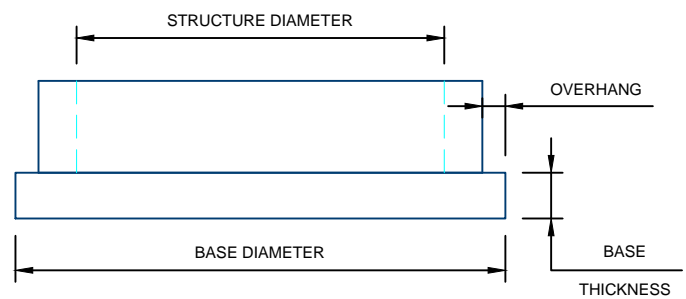


BASE SLAB DETAILS



PLAN VIEW



ELEVATION VIEW

NOTES:

1. BASE SLABS MANUFACTURED PER ASTM C478
2. ALTERNATE DIAMETERS AND DEPTHS AVAILABLE UPON REQUEST
3. SLABS CAST MONOLITHICALLY WITH BARREL SECTIONS AVAILABLE UPON REQUEST
4. DRAIN HOLES AVAILABLE UPON REQUEST

STANDARD BASE SLABS				
STRUCTURE DIAMETER	BASE DIAMETER	BASE THICKNESS	OVERHANG	BASE WEIGHT
48"	64"	6"	3"	1,680#
54"	72"	8"	3.5"	2,830#
60"	78"	8"	3"	3,320#
66"	85"	8"	3"	3,950#
72"	92"	8"	3"	4,620#
78"	100"	8"	3.5"	5,460#
84"	106"	8"	3"	6,130#
96"	119.5"	8"	2"	7,860#
108"	134"	12"	3"	14,695#
120"	148"	12"	4"	17,920#

For more information about our products please contact us at:
(320) 392-5207

www.hancockconcrete.com

© 2015 Hancock Concrete Products, LLC