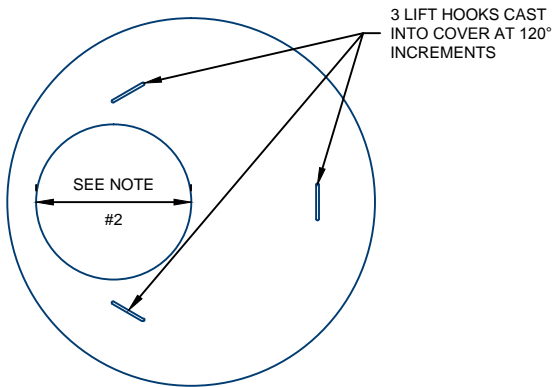
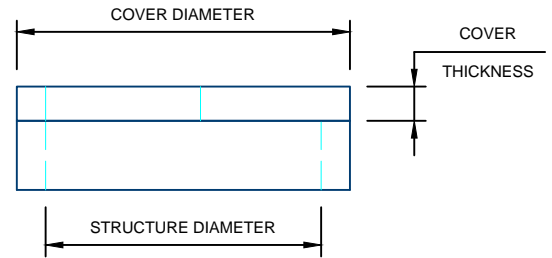


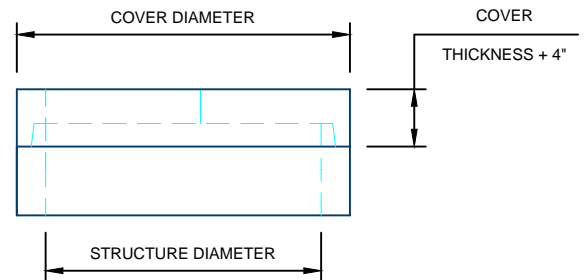
COVER SLAB DETAILS



PLAN VIEW



**STANDARD COVER
ELEVATION VIEW**



**GASKETED COVER
ELEVATION VIEW**

NOTES:

- COVER SLABS MANUFACTURED PER ASTM C478
- 27", 30", 3'X2', & VARIOUS HATCH OPENINGS AVAILABLE UPON REQUEST
- CASTINGS/HATCHES CAN BE EMBEDDED IN COVER UPON REQUEST

| STANDARD COVER SLABS | | | | |
|----------------------|----------------|-----------------|-------------------|-------------------|
| STRUCTURE DIAMETER | COVER DIAMETER | COVER THICKNESS | STD. COVER WEIGHT | GSK. COVER WEIGHT |
| 48" | 58" | 6" | 1,080# | 1,260# |
| 54" | 65" | 8" | 1,910# | 2,130# |
| 60" | 72" | 8" | 2,430# | 2,690# |
| 66" | 79" | 8" | 3,010# | 3,320# |
| 72" | 86" | 8" | 3,640# | 4,000# |
| 78" | 93" | 8" | 4,320# | 4,730# |
| 84" | 100" | 8" | 5,060# | 5,530# |
| 96" | 115.5" | 8" | 6,880# | 7,580# |
| 108" | 128" | 12" | 12,810# | 13,550# |
| 120" | 140" | 12" | 15,440# | 16,320# |

For more information about our products please contact us at:
(320) 392-5207

www.hancockconcrete.com

© 2015 Hancock Concrete Products, LLC