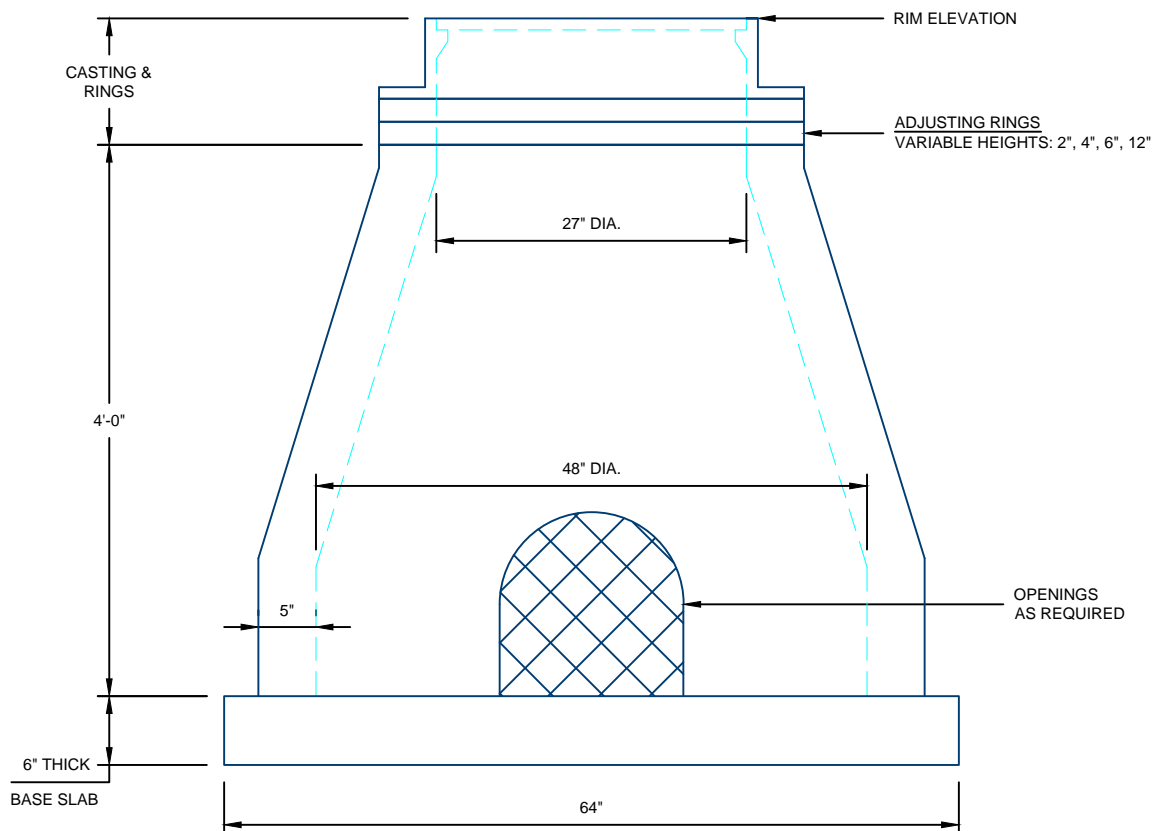


### 48" CATCH BASIN DESIGN DETAILS



CONE WEIGHT = 2,900 LBS  
BASE WEIGHT = 1,680 LBS

NOTES:

1. ALL COMPONENTS ARE MANUFACTURED PER ASTM C478

For more information about our products please contact us at:  
(320) 392-5207

[www.hancockconcrete.com](http://www.hancockconcrete.com)

© 2015 Hancock Concrete Products, LLC