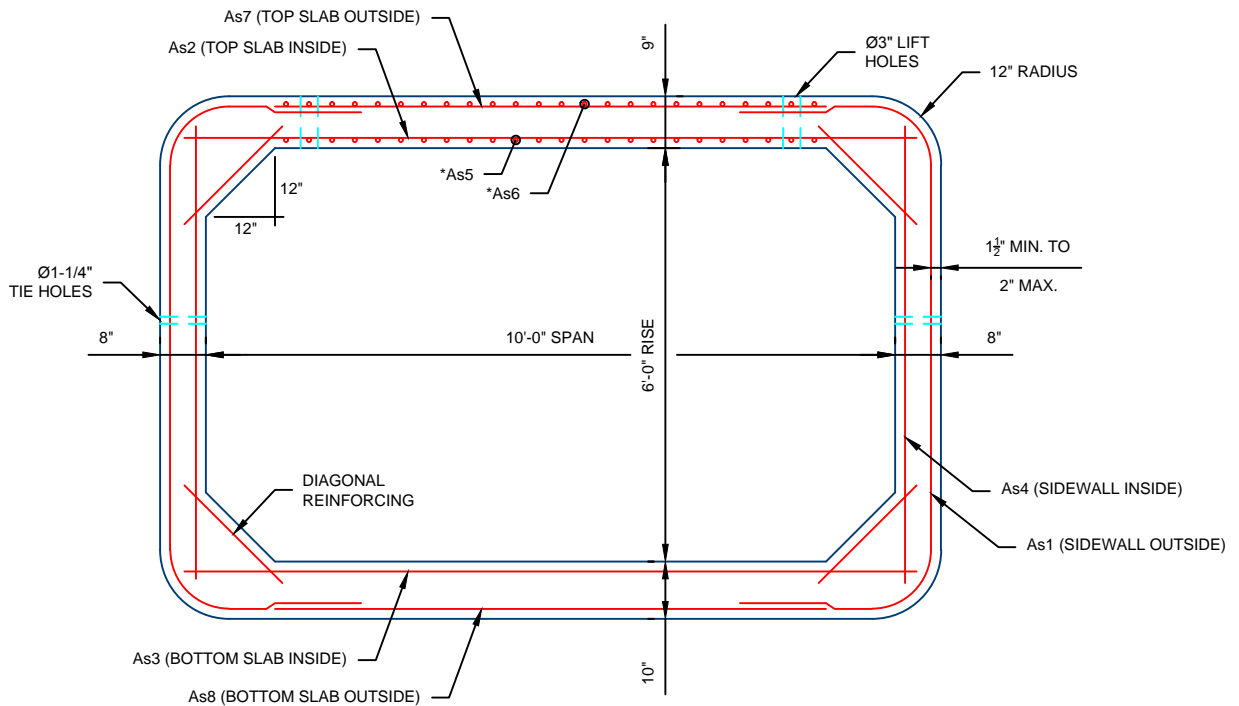
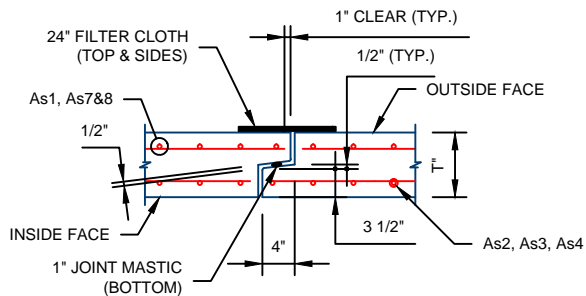


10' X 6' BOX CULVERT SINGLE CELL DESIGN DETAILS



*As5 & As6 REPRESENT DISTRIBUTION STEEL IN THE TOP SLAB WHEN REQUIRED.



TONGUE & GROOVE JOINT DETAIL

WEIGHT = 4,200 LBS/FT
LAY LENGTHS = 4', 5' & 6' LENGTHS AVAILABLE

LOADING, DESIGN METHODS AND MATERIALS COMPLY WITH CURRENT AASHTO LRFD BRIDGE DESIGN SPECIFICATIONS, UNLESS REQUESTED OTHERWISE

MATERIAL PROPERTIES
WWF REINFORCEMENT = 65 KSI
REBAR REINFORCEMENT = 60 KSI
CONCRETE STRENGTH = 5 KSI

MEMBER THICKNESS AND CONCRETE STRENGTHS BASED ON CLASS II OVERFILL DEPTHS AND LOADING REQUIREMENTS, SPECIAL DESIGNS AVAILABLE UPON REQUEST, PLEASE CALL FOR MORE INFORMATION

For more information about our products please contact us at:
(320) 392-5207

www.hancockconcrete.com

© 2015 Hancock Concrete Products, LLC