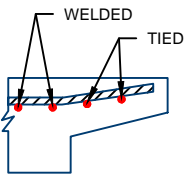
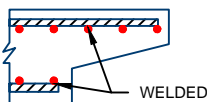


SECTION AT PIPE JOINT

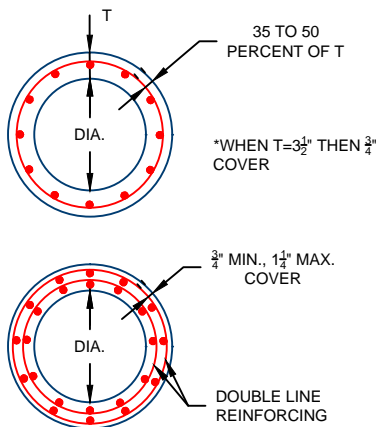


SINGLE LINE



DOUBLE LINE

REINFORCING AT ENDS OF PIPE



HALF SECTIONS

D: INTERNAL DIAMETER OF PIPE IN IN.	CROSS SECTIONAL WATER AREA (SQ.FT)	WEIGHT PER LINEAR FOOT OF PIPE (LBS)	T: MINIMUM WALL THICKNESS	J: LENGTH OF JOINT	A: NOMINAL	D1	D2	D3	D4
12	0.79	92	2"	1 1/4"	3/16"	13 1/4"	13 3/8"	13 7/8"	14 1/4"
15	1.23	125	2 1/4"	2"	3/16"	16 1/4"	16 5/8"	17 1/4"	17 5/8"
18	1.77	168	2 1/2"	2 1/4"	3/16"	19 5/8"	20"	20 3/8"	20 3/4"
21	2.40	214	2 3/4"	2 1/2"	3/16"	22 7/8"	23 1/4"	23 3/4"	24 1/8"
24	3.14	265	3"	2 3/4"	3/16"	26"	26 3/8"	27"	27 3/8"
27	3.98	322	3 1/4"	3"	3/16"	29 1/4"	29 5/8"	30 1/4"	30 5/8"
30	4.91	384	3 1/2"	3 1/4"	3/16"	32 3/8"	32 3/4"	33 1/2"	33 5/8"
33	5.94	452	3 3/4"	3 1/2"	1/4"	35 1/2"	36"	36 3/4"	37 1/4"
36	7.07	525	4"	3 3/4"	1/4"	38 3/4"	39 1/4"	40"	40 1/2"
42	9.62	685	4 1/2"	4"	1/4"	45 3/8"	45 5/8"	46 1/2"	47"
48	12.57	865	5"	4 1/2"	1/4"	51 1/2"	52"	53"	53 1/2"
54	15.90	1070	5 1/2"	4 1/2"	1/4"	57 3/8"	58 3/8"	59 3/8"	59 3/8"
60	19.63	1300	6"	5"	1/4"	64 1/4"	64 3/4"	66"	66 1/2"
66	23.76	1542	6 1/2"	5 1/2"	1/4"	70 5/8"	71 1/8"	72 1/2"	73"
72	28.27	1810	7"	6"	1/4"	77"	77 1/2"	79"	79 1/2"
78	33.18	2100	7 1/2"	6 1/2"	1/4"	83 3/8"	83 3/4"	85 5/8"	86 1/8"
84	38.48	2410	8"	7"	1/4"	89 3/4"	90 1/4"	92 1/8"	92 3/8"
96	50.27	3380	9.75"	7"	1/4"	102 1/8"	102 3/8"	104 1/2"	105"
108	63.62	3870	10"	7 1/2"	1/4"	115 1/2"	116"	118"	118 1/2"

NOTES:

- ALL PIPE IS MANUFACTURED IN ACCORDANCE WITH ASTM C-76 & C-655

For more information about our products please contact us at:  
(320) 392-5207

[www.hancockconcrete.com](http://www.hancockconcrete.com)

© 2015 Hancock Concrete Products, LLC