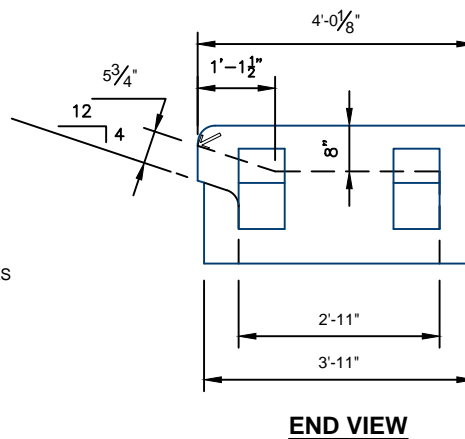
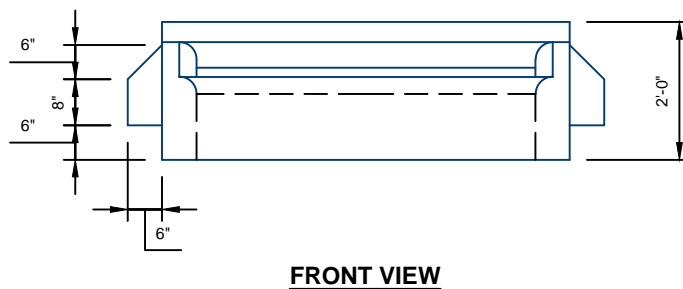
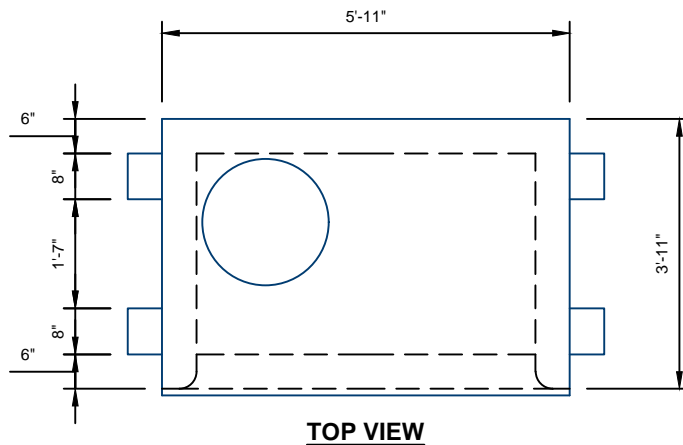


### 4' x 11' TYPE S COVER DESIGN DETAILS



WEIGHT = 3,950 LB

**NOTES:**

1. PRE-APPROVED TO MANUFACTURE BY SDDOT.
2. COVER SUPPLIED WITH THREADED DOWEL RODS AND SHIM PACKS

For more information about our products please contact us at:  
(605) 335-7807

[www.hancockconcrete.com](http://www.hancockconcrete.com)

© 2015 Hancock Concrete Products, LLC