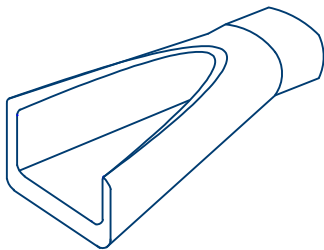
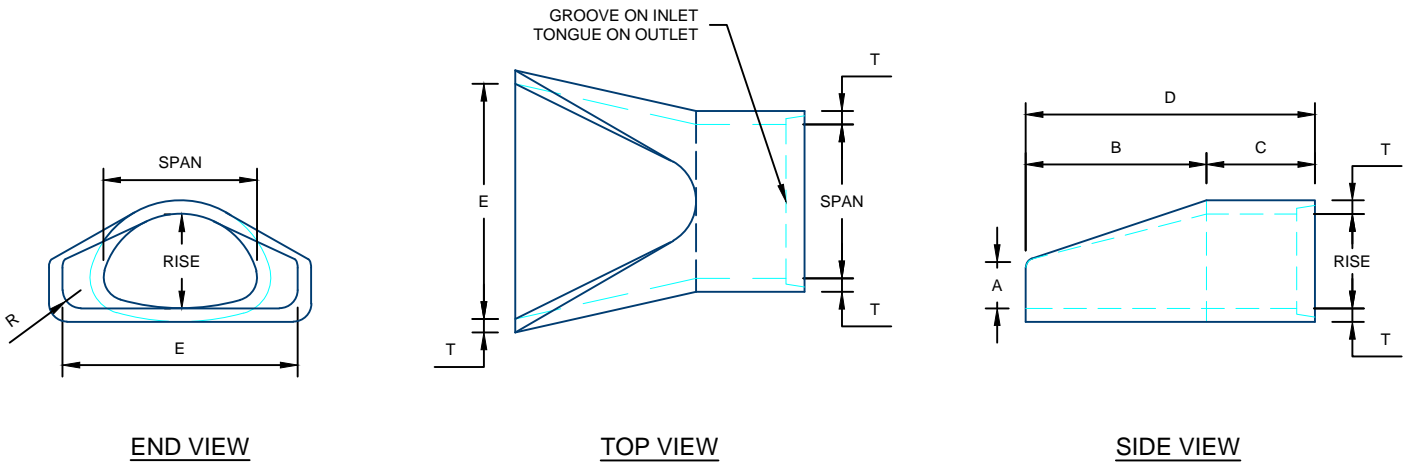


**REINFORCED CONCRETE ARCH  
FLARED END SECTION DETAILS**



PERSPECTIVE

SPAN	RISE	T	WEIGHT	SLOPE	A	B	C	D	E	R
22"	13"	2 $\frac{1}{2}$ "	1,100#	1 TO 3	7"	27"	45"	72"	36"	2"
29"	18"	3 $\frac{1}{2}$ "	1,750#	1 TO 3	8 $\frac{1}{2}$ "	39"	33"	72"	48"	3"
36"	22"	4"	3,300#	1 TO 3	9 $\frac{1}{2}$ "	50"	46"	96"	60"	3"
44"	26"	4 $\frac{1}{2}$ "	4,350#	1 TO 3	11 $\frac{1}{8}$ "	60"	36"	96"	72"	6"
51"	31"	4 $\frac{1}{2}$ "	5,250#	1 TO 3	15 $\frac{1}{16}$ "	60"	36"	96"	78"	6"
58"	36"	5"	6,400#	1 TO 3	21"	60"	36"	96"	84"	6"
65"	40"	5 $\frac{1}{2}$ "	7,850#	1 TO 3	25 $\frac{1}{2}$ "	60"	36"	96"	90"	6"
73"	45"	6"	9,500#	1 TO 3	31"	60"	36"	96"	96"	6"
88"	54"	7"	13,550#	1 TO 2	31"	60"	39"	99"	120"	6"
102"	62"	8"	17,950#	1 TO 2	28 $\frac{1}{2}$ "	83"	19"	102"	144"	6"

NOTES:

1. MANUFACTURED IN ACCORDANCE WITH ASTM C506.

For more information about our products please contact us at:  
(605) 335-7807

[www.hancockconcrete.com](http://www.hancockconcrete.com)

© 2015 Hancock Concrete Products, LLC