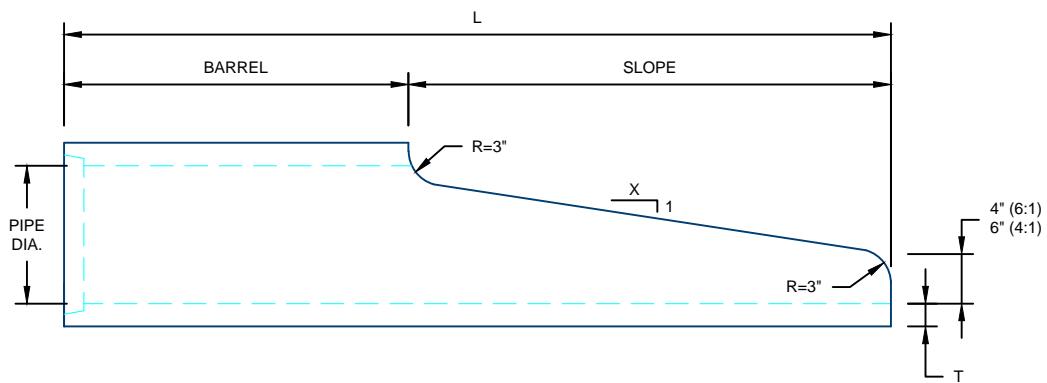


REINFORCED CONCRETE SAFETY APRON DETAILS
12" TO 24" DIAMETER



SLOPED END SECTION
12"-24" DIAMETER

DIA	X	T	SLOPE	BARREL	L	LENGTHS		WEIGHTS	
						SECT. #1	SECT. #2	SECT. #1	SECT. #2
12	6	2"	3'-6"	2'-6"	6'-0"	6'-0"	N/A	415#	N/A
15	6	2 $\frac{1}{4}$ "	5'-0"	2'-0"	7'-0"	7'-0"	N/A	595#	N/A
18	6	2 $\frac{1}{2}$ "	6'-9"	1'-3"	8'-0"	8'-0"	N/A	850#	N/A
24	6	3"	10'-0"	2'-0"	12'-0"	6'-0"	6'-0"	1,280#	720#
18	4	2 $\frac{1}{2}$ "	3'-10"	2'-2"	6'-0"	6'-0"	N/A	750#	N/A
24	4	3"	6'-0"	2'-0"	8'-0"	8'-0"	N/A	1,450#	N/A

NOTES:

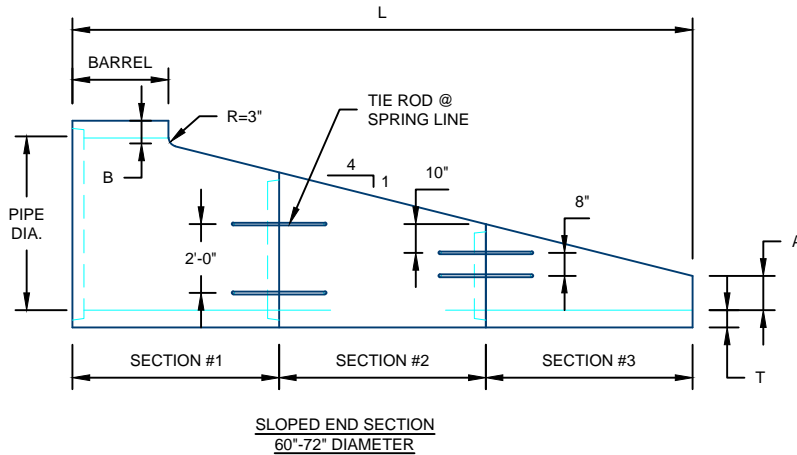
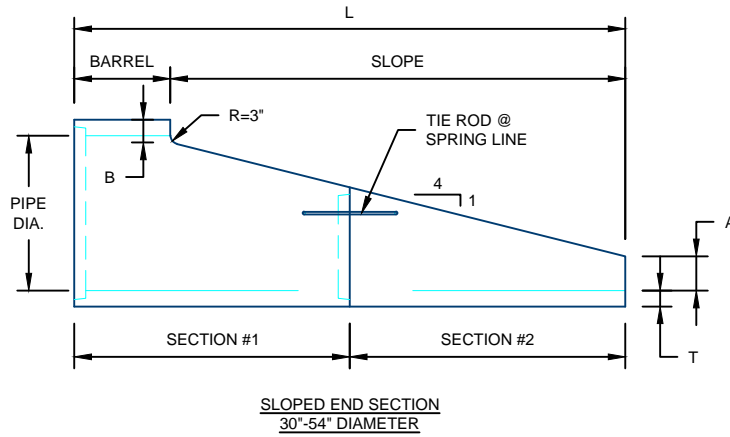
1. MANUFACTURED IN ACCORDANCE WITH ASTM C-76.

For more information about our products please contact us at:
(605) 335-7807

www.hancockconcrete.com

© 2015 Hancock Concrete Products, LLC

REINFORCED CONCRETE SAFETY APRON DETAILS
30" TO 72" DIAMETER



DIA	T	A	B	SLOPE	BARREL	L	LENGTHS			WEIGHTS		
							SECT. #1	SECT. #2	SECT. #3	SECT. #1	SECT. #2	SECT. #3
30	3½"	9⅝"	5⅝"	6'-0"	2'-0"	8'-0"	8'-0"	N/A	N/A	2,170#	N/A	N/A
36	4"	12"	6½"	7'-3"	1'-3"	8'-6"	8'-6"	N/A	N/A	2,880#	N/A	N/A
42	4½"	12"	6⅞"	9'-2½"	2'-9½"	12'-0"	6'-0"	6'-0"	N/A	3,460#	2,060#	N/A
48	5"	12"	7⅞"	11'-2½"	2'-9½"	14'-0"	8'-0"	6'-0"	N/A	5,470#	2,400#	N/A
54	5½"	12"	7⅞"	13'-2½"	2'-9½"	16'-0"	8'-0"	8'-0"	N/A	6,850#	4,000#	N/A
60	6"	12"	8⅞"	15'-2½"	2'-9½"	18'-0"	6'-0"	6'-0"	6'-0"	6,740#	4,610#	3,220#
72	7"	12"	9⅞"	19'-2½"	2'-9½"	22'-0"	8'-0"	8'-0"	6'-0"	11,920#	7,960#	4,070#

NOTES:

1. MANUFACTURED IN ACCORDANCE WITH ASTM C-76.

For more information about our products please contact us at:
(605) 335-7807

www.hancockconcrete.com

© 2015 Hancock Concrete Products, LLC