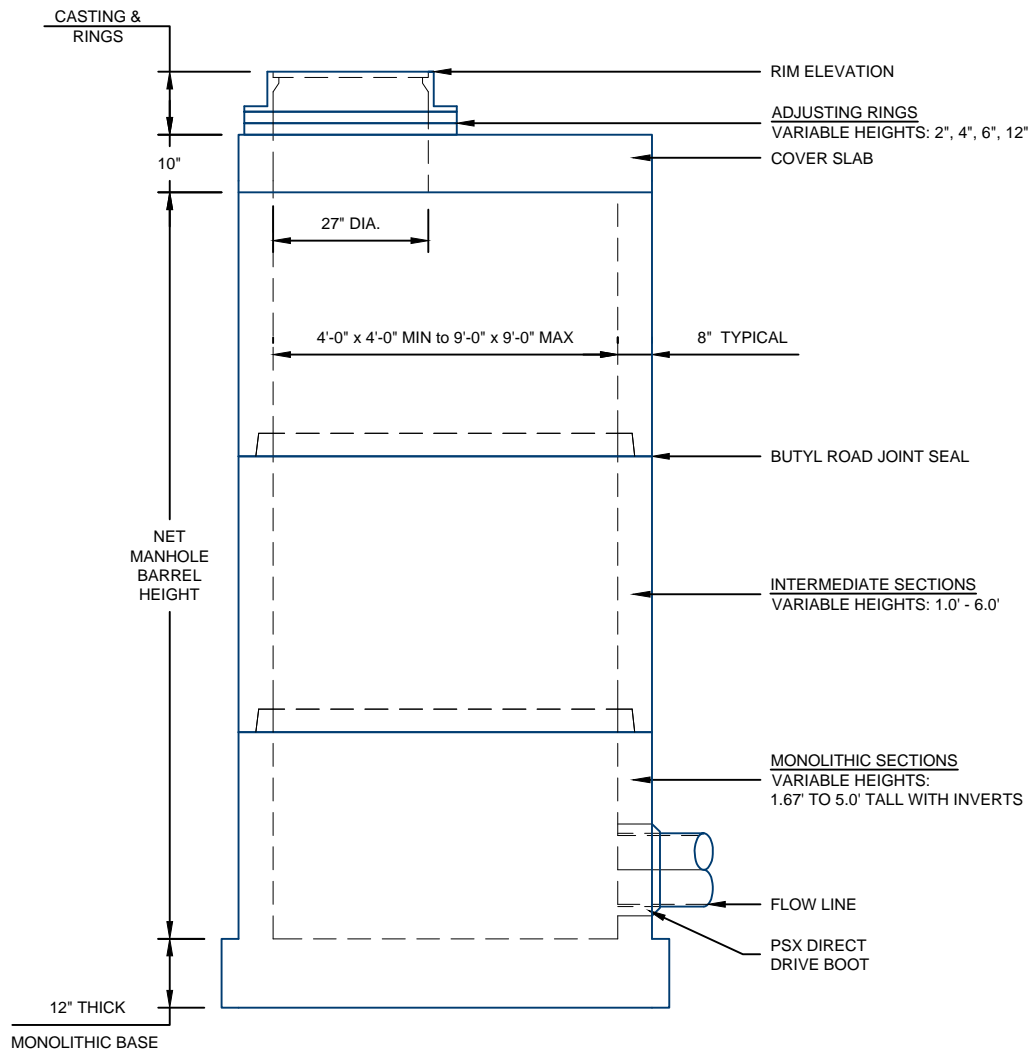


### 60"-96" SANITARY MANHOLE DESIGN DETAILS



#### NOTES:

1. ALL COMPONENTS ARE MANUFACTURED PER SUDAS SW-302
2. POURED INVERTS AVAILABLE AS REQUIRED

For more information about our products please contact us at:  
(712) 665-2822

[www.hancockconcrete.com](http://www.hancockconcrete.com)

© 2015 Hancock Concrete Products, LLC