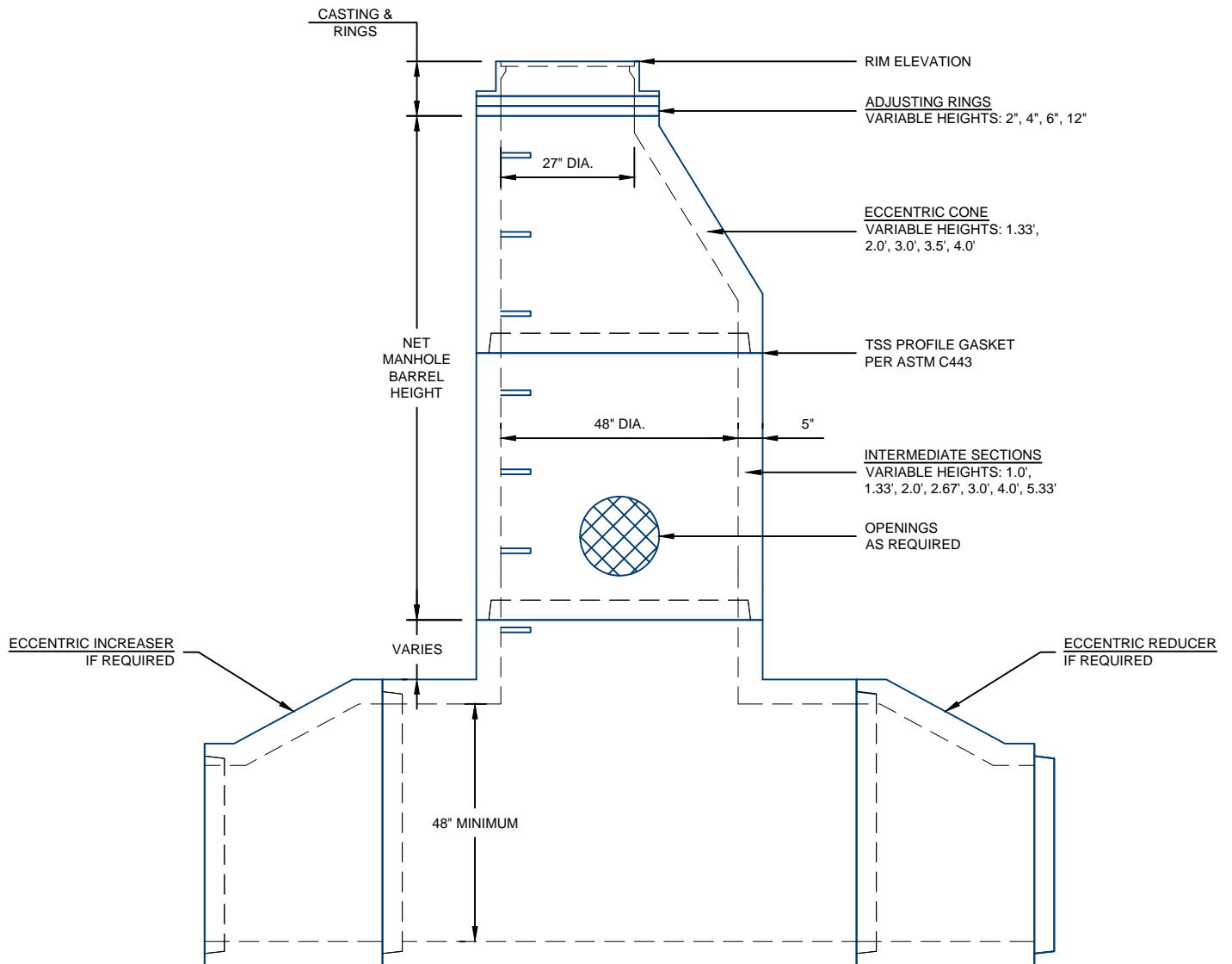


48" SANITARY MANHOLE STANDARD TEE DESIGN DETAILS



BARREL WEIGHT = 865 LBS/FT

NOTES:

1. ALL COMPONENTS ARE MANUFACTURED PER ASTM C478.
2. STEPS PROVIDED - TYPICAL

For more information about our products please contact us at:
(712) 665-2822

www.hancockconcrete.com

© 2015 Hancock Concrete Products, LLC