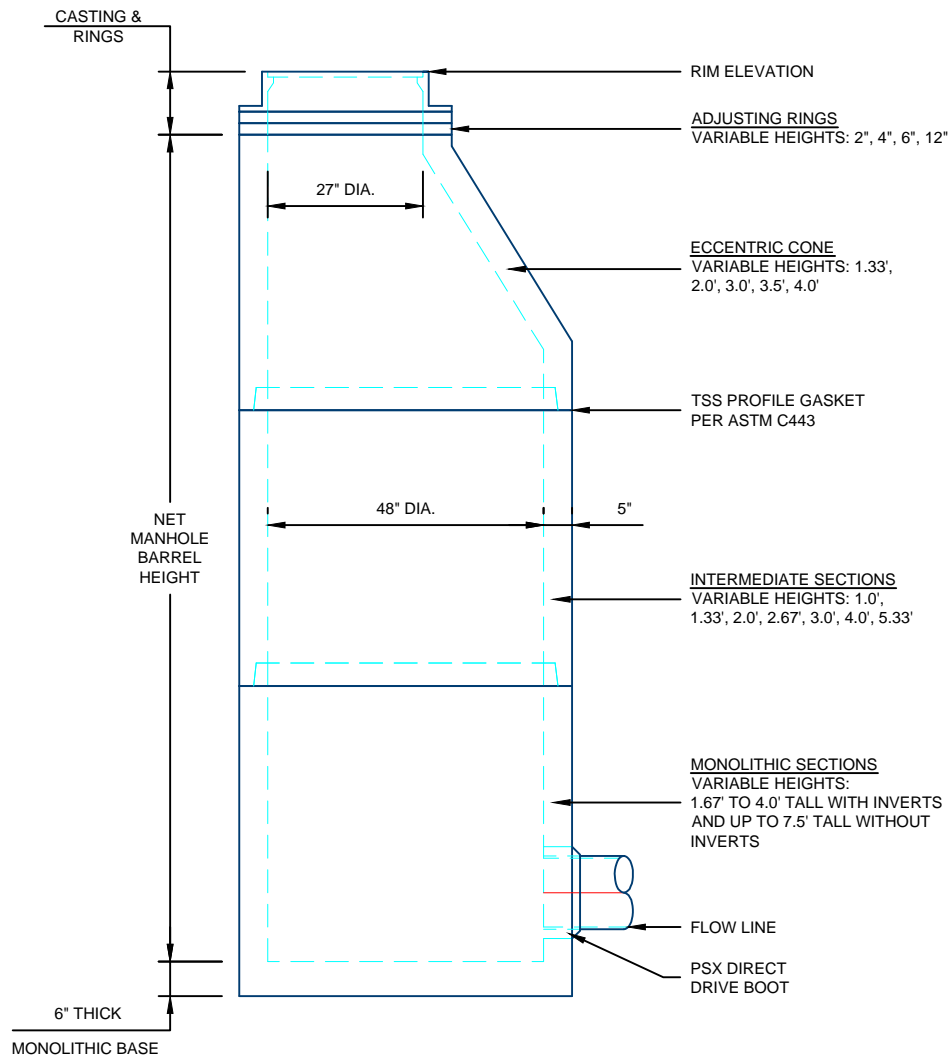


### 48" SANITARY MANHOLE DESIGN DETAILS



BARREL WEIGHT = 865 LBS/FT  
INTEGRAL BASE = 945 LBS

**NOTES:**

1. ALL COMPONENTS ARE MANUFACTURED PER ASTM C478.
2. STEPS PROVIDED AS REQUIRED.
3. POURED INVERTS AVAILABLE AS REQUIRED.

For more information about our products please contact us at:  
(701) 393-4424

[www.hancockconcrete.com](http://www.hancockconcrete.com)

© 2015 Hancock Concrete Products, LLC