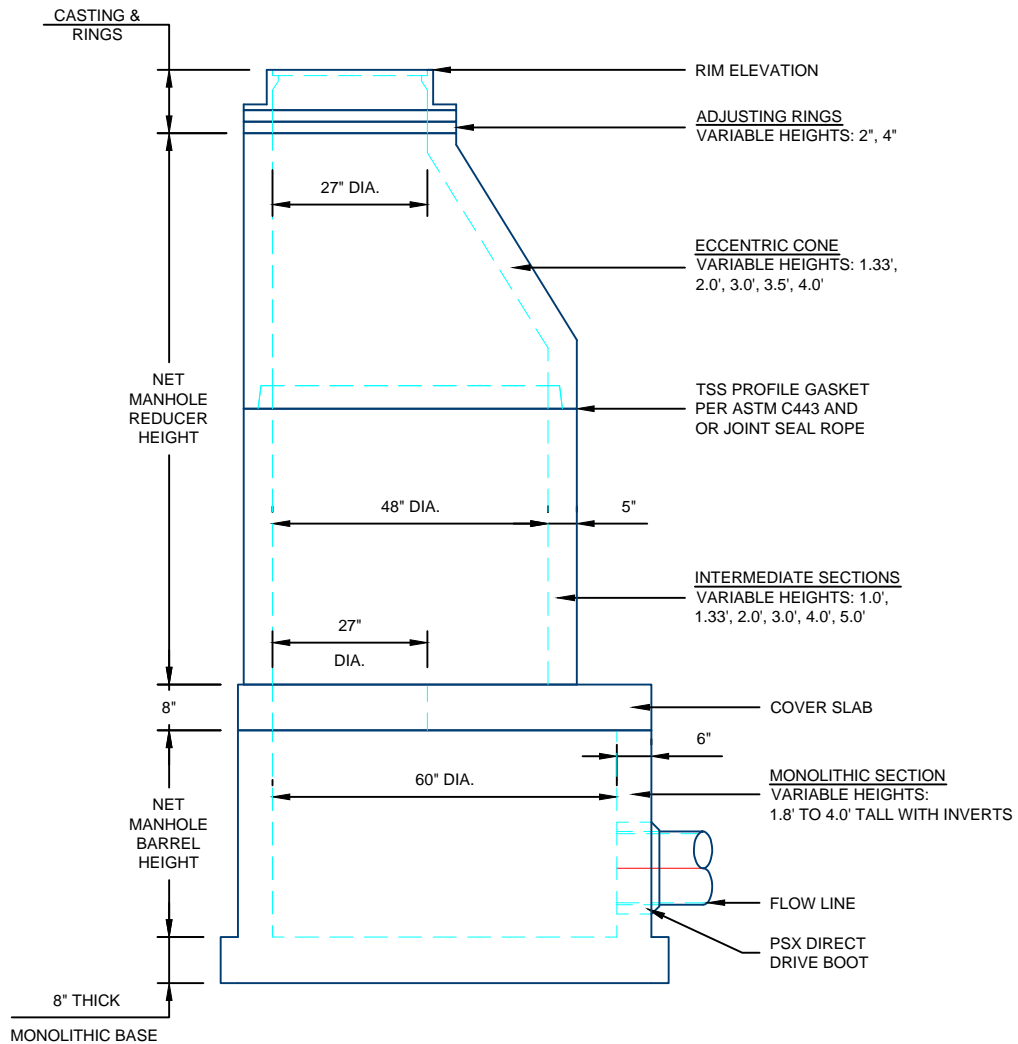


### 60" SANITARY MANHOLE WITH 48" REDUCER DESIGN DETAILS



48" BARREL WEIGHT = 865 LBS/FT  
 60" COVER WEIGHT = 2,430 LBS  
 60" BARREL WEIGHT = 1,300 LBS/FT  
 INTEGRAL BASE = 3,320 LBS

#### NOTES:

1. ALL COMPONENTS ARE MANUFACTURED PER ASTM C478
2. STEPS PROVIDED AS REQUIRED
3. POURED INVERTS AVAILABLE AS REQUIRED

For more information about our products please contact us at:  
 (701) 393-4424

[www.hancockconcrete.com](http://www.hancockconcrete.com)

© 2015 Hancock Concrete Products, LLC