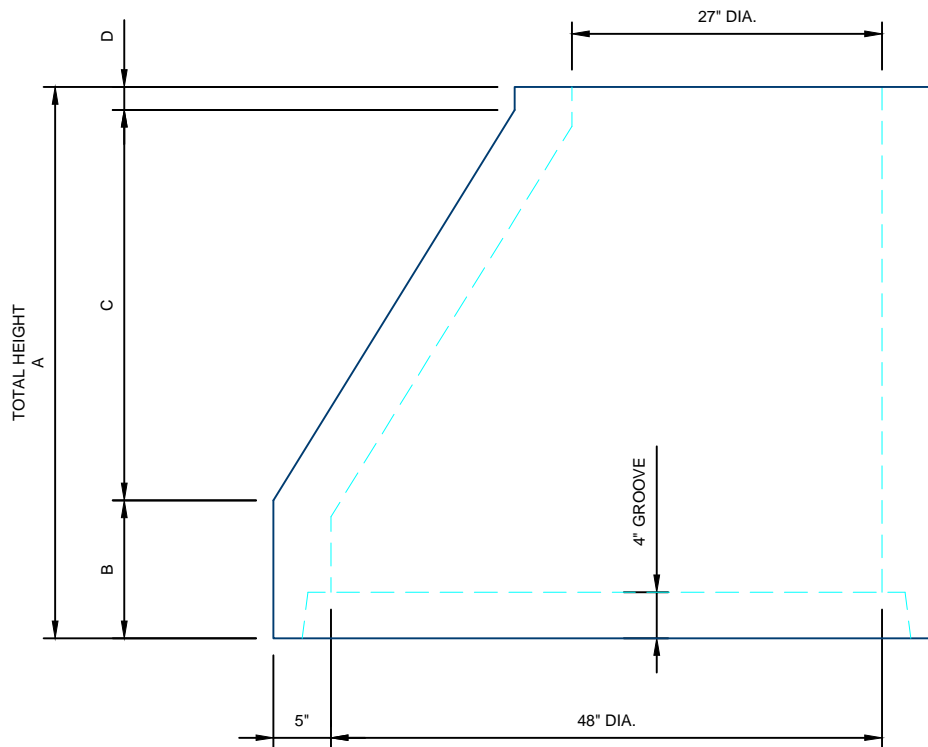


48" ECCENTRIC CONE DESIGN DETAILS



NOTES:

1. ALL COMPONENTS ARE MANUFACTURED PER ASTM C478

STANDARD ECCENTRIC CONES				
TOTAL HEIGHT A	B	C	D	WEIGHT
1.33'	8"	6.5"	1.5"	1,200#
2.00'	1.33'	6.5"	1.5"	1,750#
3.00'	2.33'	6.5"	1.5"	2,650#
3.50'	6"	2.83'	2"	2,600#
4.00'	12"	2.83'	2"	3,080#

For more information about our products please contact us at:
(320) 392-5207

www.hancockconcrete.com

© 2015 Hancock Concrete Products, LLC