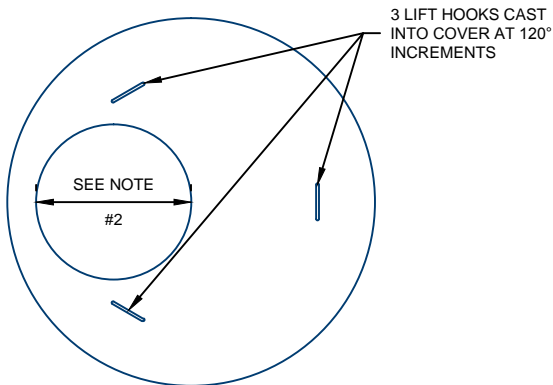
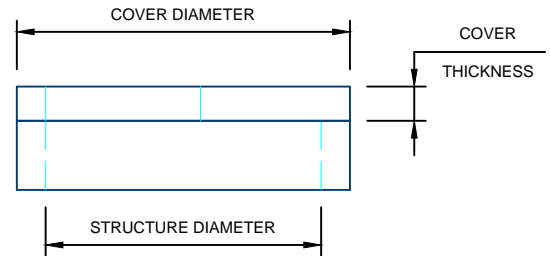


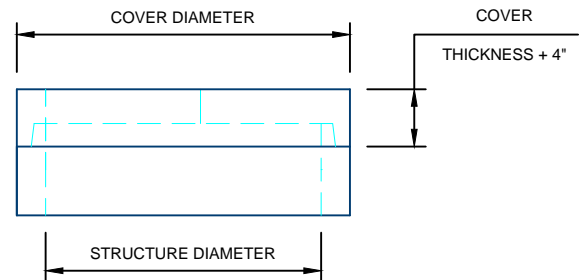
COVER SLAB DETAILS



PLAN VIEW



**STANDARD COVER
ELEVATION VIEW**



**GASKETED COVER
ELEVATION VIEW**

NOTES:

- COVER SLABS MANUFACTURED PER ASTM C478
- 27", 30", 3'X2', & VARIOUS HATCH OPENINGS AVAILABLE UPON REQUEST
- CASTINGS/HATCHES CAN BE EMBEDDED IN COVER UPON REQUEST

STANDARD COVER SLABS				
STRUCTURE DIAMETER	COVER DIAMETER	COVER THICKNESS	STD. COVER WEIGHT	GSK. COVER WEIGHT
48"	58"	6"	1,080#	1,260#
54"	65"	8"	1,910#	2,130#
60"	72"	8"	2,430#	2,690#
66"	79"	8"	3,010#	3,320#
72"	86"	8"	3,640#	4,000#
78"	93"	8"	4,320#	4,730#
84"	100"	8"	5,060#	5,530#
96"	115.5"	8"	6,880#	7,580#
108"	128"	12"	12,810#	13,550#
120"	140"	12"	15,440#	16,320#

For more information about our products please contact us at:
(701) 393-4424

www.hancockconcrete.com

© 2015 Hancock Concrete Products, LLC