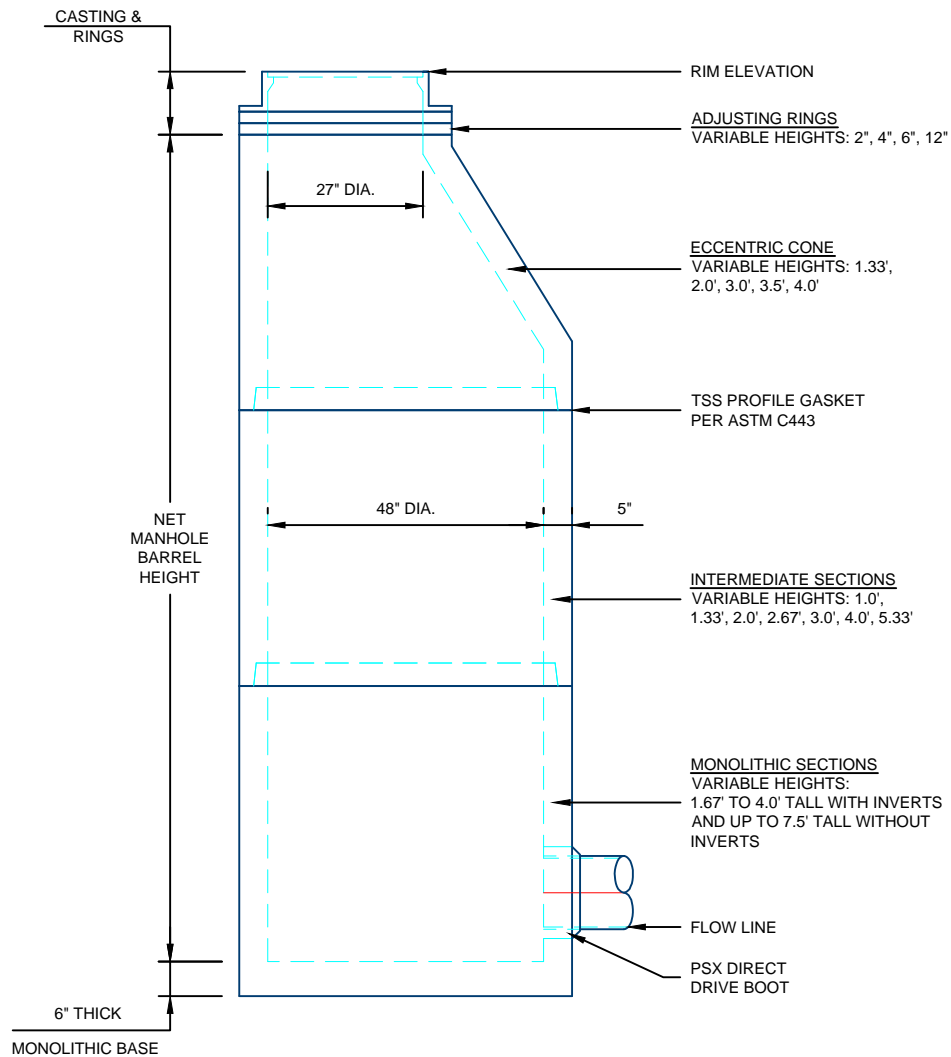


48" SANITARY MANHOLE DESIGN DETAILS



BARREL WEIGHT = 865 LBS/FT
INTEGRAL BASE = 945 LBS

NOTES:

1. ALL COMPONENTS ARE MANUFACTURED PER ASTM C478.
2. STEPS PROVIDED AS REQUIRED.
3. POURED INVERTS AVAILABLE AS REQUIRED.

For more information about our products please contact us at:
(320) 392-5207

www.hancockconcrete.com

© 2015 Hancock Concrete Products, LLC