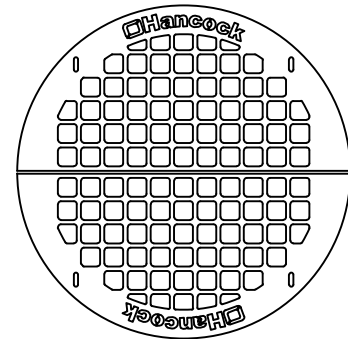
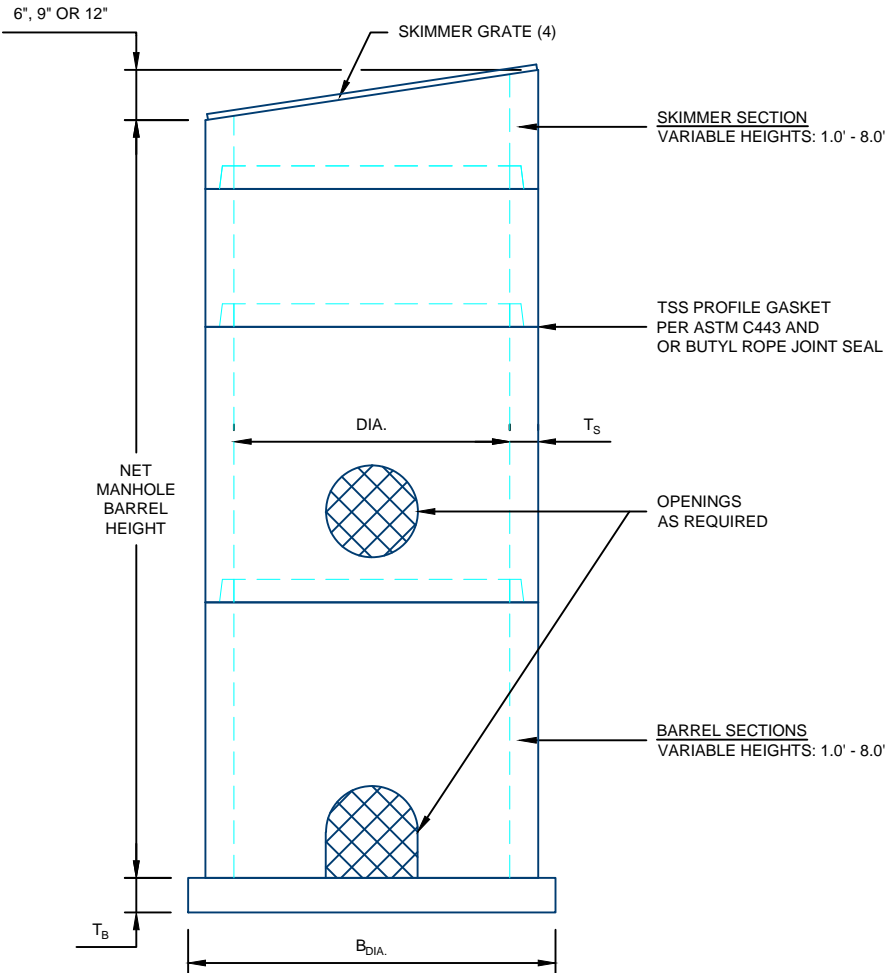


### SKIMMER STRUCTURE DESIGN DETAILS



**TYPICAL SKIMMER  
GRATE DETAIL**

**NOTES:**

1. ALL COMPONENTS ARE MANUFACTURED PER ASTM C478
2. STEPS PROVIDED AS REQUIRED
3. INTEGRAL BASE AVAILABLE
4. CUSTOM GRATES & TRASH RACKS AVAILABLE UPON REQUEST
5. WEIR WALLS AVAILABLE UPON REQUEST

AVAILABLE STRUCTURES					
STRUCTURE DIAMETER	T <sub>s</sub>	B <sub>DIA.</sub>	T <sub>B</sub>	BARREL WEIGHT	BASE WEIGHT
48"	5"	64"	6"	865 #/FT	1,680#
54"	5.5"	72"	8"	1,070 #/FT	2,830#
60"	6"	78"	8"	1,300 #/FT	3,320#
66"	6.5"	85"	8"	1,545 #/FT	3,950#
72"	7"	92"	8"	1,810 #/FT	4,620#
78"	7.5"	100"	8"	2,100 #/FT	5,460#
84"	8"	106"	8"	2,410 #/FT	6,130#
96"	9.75"	119.5"	8"	3,375 #/FT	7,860#
108"	10"	134"	12"	3,870 #/FT	14,695#
120"	10"	148"	12"	4,255 #/FT	17,920#

For more information about our products please contact us at:  
(320) 392-5207

[www.hancockconcrete.com](http://www.hancockconcrete.com)

© 2015 Hancock Concrete Products, LLC