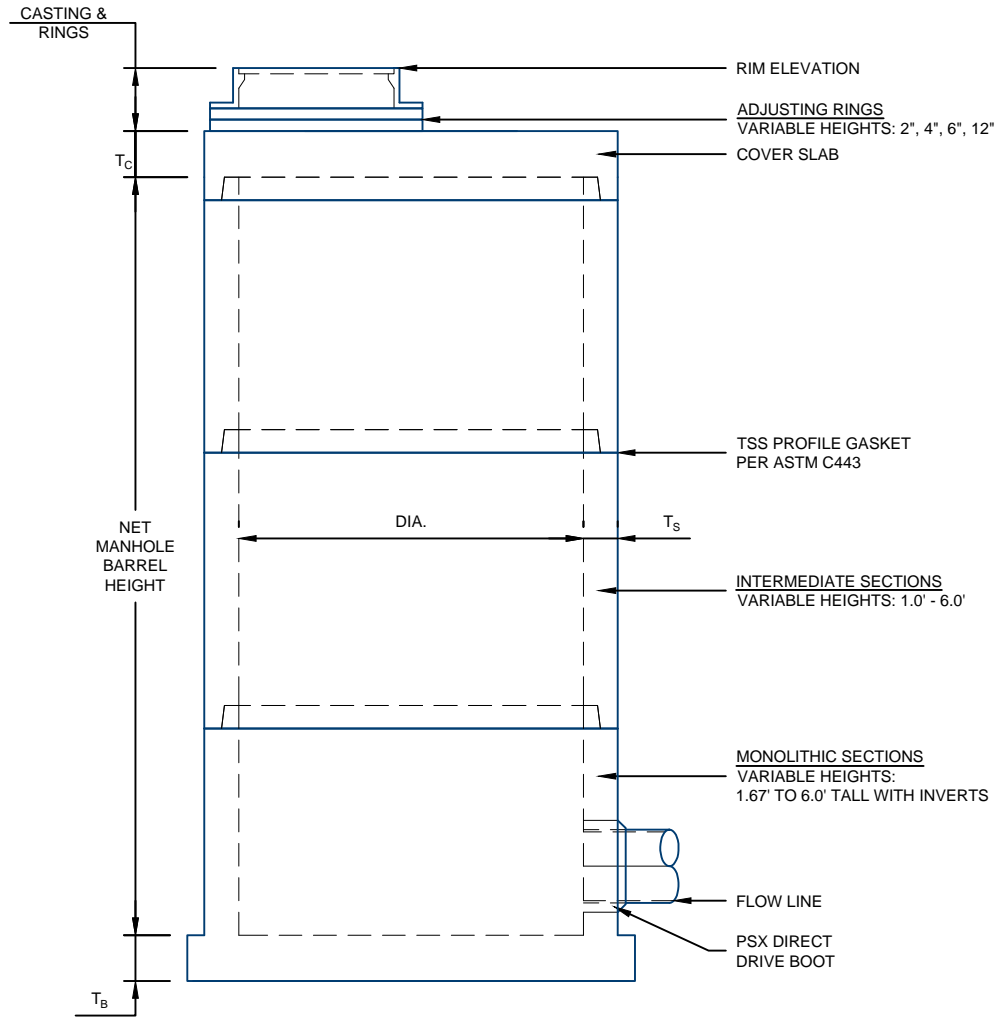


60"-120" SANITARY MANHOLE DESIGN DETAILS



NOTES:

1. ALL COMPONENTS ARE MANUFACTURED PER ASTM C478
2. Poured inverts available as required.

| AVAILABLE STRUCTURES | | | | | | | | |
|----------------------|-------|-------|------------|-------|---------------|--------------|-------------|--|
| STRUCTURE DIAMETER | T_s | T_c | $B_{DIA.}$ | T_b | BARREL WEIGHT | COVER WEIGHT | BASE WEIGHT | |
| 48" | 5" | 8" | 72" | 8" | 865 #/FT | 1,080# | 2,830# | |
| 54" | 5.5" | 8" | 72" | 8" | 1,070 #/FT | 1,910# | 2,830# | |
| 60" | 6" | 8" | 86" | 8" | 1,300 #/FT | 2,430# | 3,010# | |
| 66" | 6.5" | 8" | 86" | 8" | 1,545 #/FT | 3,010# | 3,010# | |
| 72" | 7" | 8" | 98" | 8" | 1,810 #/FT | 3,640# | 5,265# | |
| 78" | 7.5" | 8" | 98" | 8" | 2,100 #/FT | 4,320# | 5,265# | |
| 84" | 8" | 8" | 112" | 8" | 2,410 #/FT | 5,060# | 6,775# | |
| 96" | 9.75" | 8" | 120" | 8" | 3,375 #/FT | 6,880# | 7,755# | |
| 108" | 10" | 12" | 134" | 12" | 3,870 #/FT | 12,810# | 14,695# | |
| 120" | 10" | 12" | 148" | 12" | 4,255 #/FT | 15,440# | 17,920# | |

For more information about our products please contact us at:
(605) 335-7807

www.hancockconcrete.com

© 2015 Hancock Concrete Products, LLC